



SOUTHERN AFRICAN DEVELOPMENT COMMUNITY

REGIONAL AGRICULTURAL POLICY

**7 June 2013
Food, Agriculture and Natural Resources (FANR) Directorate
SADC Secretariat
Private Bag 0095
Gaborone, Botswana**

TABLE OF CONTENTS

ABBREVIATIONS AND ACRONYMS	iii
EXPLANATORY NOTE	iv
PART 1: INTRODUCTION	5
1. PREAMBLE	5
2. PURPOSE OF THE POLICY	6
3. KEY DEFINITIONS	6
4. JUSTIFICATION	6
5. POLICY GUIDING PRINCIPLES	7
PART 2: CONCEPTUAL POLICY FRAMEWORK	9
6. GOAL	9
7. OBJECTIVES	9
8. OVERALL CONCEPTUAL FRAMEWORK	9
PART 3: POLICY STATEMENTS AND STRATEGIES	11
PART 3A: ENHANCE SUSTAINABLE AGRICULTURAL PRODUCTION, PRODUCTIVITY AND COMPETITIVENESS	11
9. LAND ADMINISTRATION, USE AND MANAGEMENT	11
10. PRODUCTIVITY-ENHANCING INPUTS	11
11. FARM SUPPORT SYSTEMS AND SERVICES	15
12. FORESTRY AND FISHERIES	16
PART 3B: IMPROVE REGIONAL AND INTERNATIONAL TRADE AND ACCESS TO MARKETS OF AGRICULTURAL PRODUCTS	18
13. IMPROVING THE EFFICIENCY AND EFFECTIVENESS OF THE REGION'S INPUT AND OUTPUT MARKETS AND STIMULATING BROAD FARMERS' PARTICIPATION	18
14. IMPROVING THE REGIONAL AND INTERNATIONAL TRADE ENVIRONMENT FOR AGRICULTURE	19
15. IMPROVING THE DEVELOPMENT OF AGRICULTURE RELATED MARKET INFRASTRUCTURE	21
PART 3C: IMPROVE PRIVATE AND PUBLIC SECTOR ENGAGEMENT AND INVESTMENT IN THE AGRICULTURAL VALUE-CHAINS :	23
16. VALUE-CHAIN PROMOTION INVOLVING AGRICULTURE	23
17. MOBILISATION OF FINANCIAL CAPITAL FOR AGRICULTURE, AGRO-INDUSTRY AND AGRI-BUSINESS	24
PART 3D REDUCE SOCIAL AND ECONOMIC VULNERABILITY OF THE REGION'S POPULATION IN THE CONTEXT OF FOOD AND NUTRITION SECURITY AND THE CHANGING ECONOMIC AND CLIMATIC ENVIRONMENT	26
18. ADDRESSING CHRONIC AND TRANSITORY VULNERABILITY TO THE DIVERSITY OF FOOD SECURITY RISKS IN A CHANGING ECONOMIC ENVIRONMENT	26
19. ADDRESSING CLIMATE CHANGE, VARIABILITY AND RELATED VULNERABILITY	27

20.	MITIGATING GENDER RELATED VULNERABILITY AND MARGINALISATION	28
21.	MITIGATING HIV/AIDS RELATED VULNERABILITY AND MARGINALISATION	29
22.	MITIGATING THE VULNERABILITY OF MIGRANT/MOBILE RURAL PEOPLE	29
23.	FIGHTING AGAINST UNEMPLOYMENT AND MARGINALISATION OF THE RURAL YOUTH	30
	PART 4: POLICY IMPLEMENTATION MECHANISMS	31
24.	CONDITIONS FOR SUCCESSFUL IMPLEMENTATION	31
25.	PHASED PLANNING AND IMPLEMENTATION	31
26.	FINANCIAL INSTRUMENTS	32
27.	INSTITUTIONAL AND CORPORATE GOVERNANCE STRUCTURE	32

ABBREVIATIONS AND ACRONYMS

ADF	Agricultural Development Fund of the SADC Regional Agricultural Policy
AIMS	Agriculture Information Management System
AU	African Union
B2B	Business to Business
CA	Conservation Agriculture
CAADP	Comprehensive Africa Agricultural Development Programme
CCARDESA	Centre for Coordination of Agricultural Research and Development for Southern Africa
CET	Common External Tariff
COMESA	Common Market for Eastern and Southern Africa
CSO	Civil Society Organisation
EAC	Eastern Africa Community
EU	European Union
FANR	Food, Agriculture and Natural Resources
FAO	Food and Agriculture Organisation of the United Nations
FMD	Foot and Mouth Disease
FTA	Free Trade Area
GDP	Gross Domestic Product
GMO	Genetically Modified Organisms
ICP	International Cooperating Partners
IFPRI	International Food Policy Research Institute
MDG	Millennium Development Goals
MIC	Middle Income Country
MS	Member States of SADC
NEPAD	New Partnership for Africa's Development
NTB	Non Tariff (trade) Barrier
PPP	Public Private Partnership
PRSP	Poverty Reduction Strategy Papers
R&D	Research and Development
RAP	Regional Agricultural Policy
REC	Regional Economic Community
ReSAKSS-SA	Regional Strategic Analysis and Knowledge Support System for Southern Africa
RISDP	Regional Indicative Strategic Development Plan
RTA	Regional Trade Agreements
SACAU	Southern African Confederation of Agricultural Unions
SACU	Southern African Customs Union
SADC	Southern African Development Community
SLRSF	SADC Land Reform Support Facility
SPS	Sanitary and Phyto-Sanitary
TAD	Trans-boundary Animal Diseases
TFCA	Trans-Frontier Conservation Areas
UN	United Nations
US	United states (of America)
VAA	Vulnerability assessment and analysis
WTO	World Trade Organisation

REGIONAL AGRICULTURAL POLICY

EXPLANATORY NOTE

This policy document is divided into four parts:

Part 1, **Introduction:** outlines the purpose of the policy and the context within which it has been developed;

Part 2, **Conceptual Policy Framework:** sets out the goal, overall and specific objectives.

Part 3, **Policy and Strategy Statements:** sets out the policy issues and strategic interventions that would address each of the issues, towards the attainment of the overall policy goal and objectives.

Part 4, **Policy Implementation Mechanisms:** provides an overview of proposed implementation plan and mechanisms to operationalise the policy. Detailed instruments will require to be developed for each of these mechanisms.

REGIONAL AGRICULTURAL POLICY

PART 1 INTRODUCTION

1. PREAMBLE

1) **WHEREAS** the SADC Member States recognise the importance of Agriculture to economic growth, socio-economic development and poverty reduction, and the attainment of the SADC Common Agenda as articulated in the SADC Treaty of 1992 under Article 5 and further specified in the Report on the Review of Operations of SADC Institutions of March 2001;

2) **AND WHEREAS** Member States emphasised in the 2003 SADC Regional Indicative Strategic Development Plan (RISDP), co-operation in sustainable food security. Food Security, as defined in the Dar-es-Salaam Declaration of 2004, aims to achieve lasting access to safe and adequate food at all times by all people of SADC for an active and healthy life;

3) **AND WHEREAS** Member States further elaborated the RISDP, in relation to Agriculture and Food Security, in the Dar-es-Salaam Declaration and Action Plans on Agriculture and Food Security of 2004;

4) **AND WHEREAS** Member States acknowledge the decision to adopt the Comprehensive Africa Agriculture Development Programme (CAADP) at the Maputo Summit of the African Union (AU) in July 2003 as a framework for accelerating agricultural development and food security on the continent:

5) **AND WHEREAS** Member States acknowledge that the majority of the people live in rural areas mainly as smallholder farmers and rely on agriculture for their livelihood, the agriculture sector remains a critical employer.

6) **AND WHEREAS** Member States are committed to ensuring enhanced contribution to agricultural development and food security by women, youth and other vulnerable groups by guaranteeing them effective access to productive resources, services and social/economic opportunities. In particular, Member States acknowledge that women in agriculture who make up more than 50% of the rural population, play a central role in producing, harvesting, processing, storage and marketing of food;

7) **AND WHEREAS** the SADC region has the capacity and can master the resolve to realise its great potential to be a leading agricultural player on the continental and global scenes as it is endowed with abundant land and a wide range of related natural resources including fisheries and forestry, and generally a favourable climate for growing food;

8) **AND WHEREAS** Member States acknowledge the deep interconnectedness of agriculture with almost every other sector of the economy, hence the central role of agricultural development to the growth of both urban and rural economies including the rural non-farm sector, and the transformation of the largely agrarian population to a more industrialised economy;

9) **AND WHEREAS** at the Meeting of SADC Council of Ministers held in Lusaka, Zambia from 14 – 15 August 2007, Member States approved the review and harmonisation of the policy for Agriculture, Forestry and Fisheries;

10) **NOW THEREFORE** Member States agree to establish herein the policy for the agricultural sector entitled the SADC **Regional Agricultural Policy (RAP)**.

2. PURPOSE OF THE POLICY

11) The purpose of the SADC Regional Agricultural Policy (hereinafter referred to as the 'Policy') is to *define common agreed objectives and measures to guide, promote and support actions at regional and national levels in the agricultural sector of the SADC Member States in contribution to regional integration and the attainment of the SADC Common Agenda.*

3. KEY DEFINITION

12) The definition adopted for the 'Agriculture Sector' in this Policy is as agreed by the African Union (AU) and New Partnership for Africa's Development (NEPAD), which is based on the Classification of Functions of Government (COFOG), revised by the United Nations in 1989 and adopted by SADC Ministers in June 2007 in Lusaka, Zambia. The Agriculture Sector covers crops, livestock, forestry and fisheries.

4. JUSTIFICATION

13) Agriculture remains central to poverty reduction, growth, food and nutrition security in the Region. It provides a livelihood including subsistence, employment, income and wealth creation for nearly 61% of the Region's 277 million people (2010). Furthermore, it contributes 8% of the SADC region's Gross Domestic Product (GDP) which rises above 28% when all middle income countries are excluded.

14) The performance of agriculture has been positive at an annual growth rate of 2.6% against a population growth rate of 2.5% during the last decade. Regional production of cereals increased by 46% (2003 – 2012) due mainly to maize production increases of 40% while production of rice, wheat, sorghum and millet has remained relatively constant. Cassava production has more than doubled in the past 20 years. Similarly, livestock production increased by an average of 3% per annum. Forestry and fisheries production also showed positive growth during the same period with substantial increases in aquaculture.

15) In addition, there is great potential for growth in the region based on its natural endowments. Furthermore, the growth in urban population and global demand for agricultural products provides the region with added opportunities.

16) In spite of this positive performance, the region remains a net importer of most agricultural products. Malnutrition and food insecure population remains high with child underweight above 26% in nearly all countries in the region. Challenges remain as:

- Low labour productivity in agriculture which is 30 times lower than in developed countries though labour productivity in commercial agriculture is comparable to international standards;
- Low land productivity which has grown by a mere 1 % per annum from the 1990s;
- Low cereal yields which have remained between 1.5 and 1.7 mt /ha on average since 2000. This is below the Africa average of 2 mt/ha and 8 mt/ha for developed countries;
- Whilst intra-regional agricultural trade has performed better than other sectors, overall intra-regional trade remains, at 10% of total trade, compared to 30% in the Association of Southeast Asian Nations (ASEAN) region; and

- Declining forest resources which have gone down by 0.6% per annum due mainly to deforestation.

5. GUIDING PRINCIPLES

17) The guiding principles for formulation and implementation of the Policy are:

- a. **Subsidiarity** - whereby all programmes and activities are undertaken at levels where they can be best handled. The Policy will only undertake regional initiatives where regional coordination adds value to Member States' individual interventions and actions.
- b. **Additionality** – only programmes that add value to regional integration, or enhance the capacity to achieve Policy objectives will be implemented as priorities.
- c. **Complementarity** - regional programmes should be complementary to programmes developed and implemented at the national level.
- d. **Proportionality** - action at the regional level should not exceed that which is necessary to achieve the objectives of the Policy avoiding imposing on Member States rules that are too stringent or efforts that are too great relative to those that would be reasonable or effective.
- e. **Regionality** – the regional level only deals with issues that concern two or more Member States.
- f. **Coherence** - the policy framework should be consistent with global, continental and regional initiatives.
- g. **Partnership and Consultation** - ensure the permanent involvement of stakeholders in the agricultural and related sectors in the identification of solutions to constraints, implementation, monitoring and evaluation of the Policy.
- h. **Responsiveness to change** – acknowledgement that the Policy must be an organic or evolving policy, rather than a static instrument, that focuses on a set of basic fundamentals and grows iteratively in response to experience and changing circumstances.
- i. **Market Integration** – acknowledgement that all programmes and activities which directly integrate markets should be undertaken to facilitate free movement of factors of production, goods and services as well as the promotion of regional specialization based on comparative advantages.
- j. **Environmental sustainability** – regional programmes should aim at maintaining the region's "natural capital" and, along with both social sustainability and economic sustainability, contributing to sustainable development that meets the needs of the present without compromising the ability of future generations to meet their own needs.
- k. **Progressivity** – allow for moving forward in such a manner that takes into account different national circumstances and particular interests.

- I. **Solidarity** – the region guarantees a minimum level of cohesion between its members and provides common financial, human and institutional resources to reduce the disparities that exist between the members.

18) The Policy further recognises the existence and importance of SADC Protocols and policies with direct or indirect impact on the region's agriculture. These include but are not limited to the SADC Protocol on Trade and associated *annexes including the Annex on Sanitary and Phytosanitary (SPS); Protocol on Fisheries; Protocol on Forestry; Protocol on Wildlife Conservation and Law Enforcement; Protocol on Shared Water Courses; Protocol on Gender and Development; Protocol on Transport, Communication and Meteorology* and the SADC Water Policy. The Protocol on Environment and the SADC Industrialisation Policy are under formulation. The Policy takes fully into account relevant commitments and interventions identified in these frameworks.

19) The Policy also takes into account all key continental and international strategic frameworks that affect or are affected by agriculture, forestry and fisheries including the African Union (AU) / New Partnership for Africa's Development (NEPAD) Comprehensive Africa Agriculture Development Programme (CAADP); and the United Nations Millennium Development Goals (MDGs).

PART 2

CONCEPTUAL POLICY FRAMEWORK

6. GOAL

20) The goal of the Policy is to contribute towards the attainment of the SADC Common Agenda which promotes sustainable and equitable economic growth and socio-economic development.

7. OBJECTIVES

21) The overall objective of the Policy is to contribute to sustainable agricultural growth and socio-economic development.

22) The Policy specific objectives are to:

- a. Enhance sustainable agricultural production, productivity and competitiveness;
- b. Improve regional and international trade and access to markets of agricultural products;
- c. Improve private and public sector engagement and investment in the agricultural value-chains; and
- d. Reduce social and economic vulnerability of the region's population in the context of food and nutrition security and the changing economic and climatic environment.

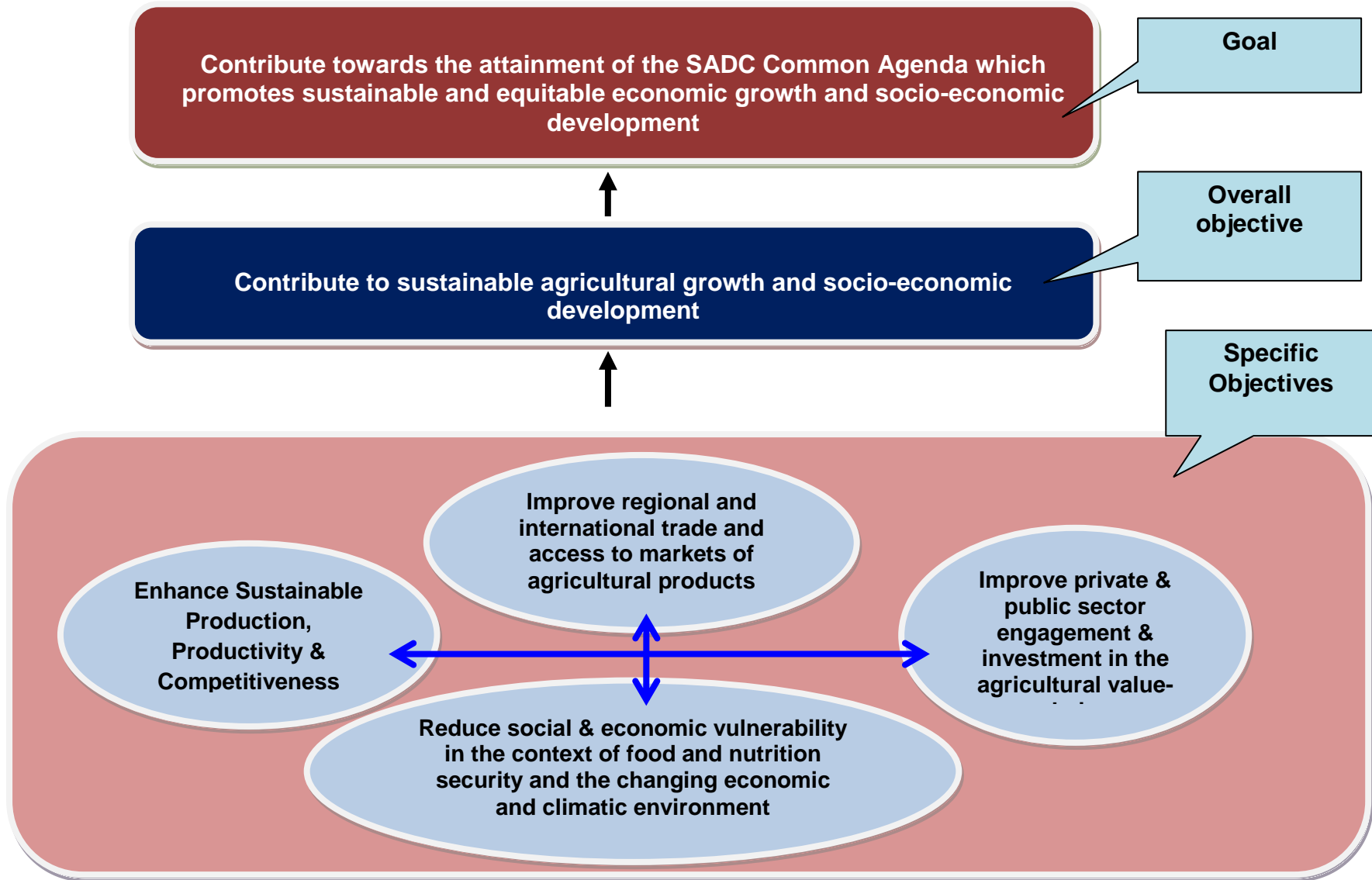
23) Due to the interrelationship of the specific objectives, the interventions identified for each policy issue are naturally intertwined.

24) In achieving the above specific objectives, the Member States will make provision for flexibility in approaches, programme design, implementation and in the management of the Policy to accommodate Member States' differences, where applicable.

8. OVERALL CONCEPTUAL FRAMEWORK

25) The overall conceptual framework of the Policy is diagrammatically depicted overleaf.

REGIONAL AGRICULTURAL POLICY – CONCEPTUAL FRAMEWORK



PART 3: POLICY STATEMENTS AND STRATEGIES

PART 3A: ENHANCE SUSTAINABLE AGRICULTURAL PRODUCTION, PRODUCTIVITY AND COMPETITIVENESS

9. LAND ADMINISTRATION, USE AND MANAGEMENT

9.1. *Policy Statement: SADC shall facilitate, coordinate and support initiatives to improve land administration, use and management.*

26) Recognising that the nature and degree of land and agrarian problems vary by Member State depending on historical, cultural and political considerations, land use management issues have the potential to undermine food and nutrition security, poverty reduction, economic growth, and political stability in the region. Hence the importance attached to land use management as directed by the SADC Council of Ministers in March 2003 through the directive to establish the SADC Land Reform Support Facility (SLRSF).

27) Therefore, the proposed interventions will include:

- a. Facilitating the implementation of various frameworks on land tenure including the SLRSF, the AU Framework and Guidelines on Land Policy in Africa, and the FAO Voluntary Guidelines on the Responsible Governance of Tenure of Land, Fisheries and Forests in the context of National Food Security, with particular focus on access to land, land tenure security, management, rehabilitation and sustainable utilisation, administration, adjudication and reform;
- b. Coordinating the development of regional land policy guidelines and facilitating domestication at the national level;
- c. Promoting land policy research and development (R&D) taking into account gender, youth and vulnerable groups; and
- d. Promoting access to land for the disadvantaged groups of the population;
- e. Promoting investment in land administration, use and management

10. PRODUCTIVITY- ENHANCING INPUTS

28) For the region to attain regional food and nutrition security in the short to medium – term, access to affordable, appropriate and cost-effective productivity-enhancing inputs including improved plant and animal genetic material, and enhanced application of mineral and/or organic nutrients to correct soil fertility, must be prioritised. Assured access to cost effective yield-enhancing inputs for sustained application on farms is the most direct means to raise productivity.

29) To increase productivity, activities must aim at reducing pre and post-harvest losses. This requires the management of pests and diseases and the provision of appropriate market infrastructure and services.

30) Without adequate water provision, production and productivity will remain a challenge. It is critical therefore that water resources for agriculture be prioritised.

31) Similarly, farmer participation in certain production processes is limited by low levels of mechanical as well as electrical energy use. To that effect, the provision of energy for agriculture is key to increased production, productivity and competitiveness.

10.1. Policy Statement: SADC shall complement national interventions by promoting and supporting measures to improve farmer access to improved plant and animal genetic material and the adoption of biotechnology in crop and livestock development

32) Few farmers are able to access improved and adequate levels of supply of technologically improved plant and animal genetic material. This situation seriously impedes agricultural production and productivity. On the other hand, the loss of indigenous plant and animal genetic material that is well adapted to regional conditions, including tolerance to climatic stresses, has aggravated the situation. Coupled with suboptimal production practices such as inadequate and in appropriate husbandry, nutrition and rangeland management, agricultural productivity in the region has deteriorated.

33) Worldwide modern biotechnology including genetic modification technology has been in use for more than two decades. However debate about the food safety, environmental safety and socio-economic impacts of genetically modified organisms (GMOs) is still vigorous. Whilst biotechnology can contribute to solving agricultural productivity and environmental degradation challenges, the lack of capacity to regulate GMOs is a potential deterrent to embracing and adequately harnessing its potential.

34) Therefore, the proposed interventions will include:

- a. Facilitating private/public sector initiatives that promote economies of scale in production and distribution of improved seeds, as well as other plant and animal genetic materials;
- b. Promoting forage research and the establishment of viable forage seed industry;
- c. Promoting regional value-chain partnerships in stockfeed production;
- d. Facilitating agreement on a harmonised approach to the safe use of modern biotechnology and clarifying how to deal with GMOs;
- e. Promoting national capacity and regional collaboration for research in biotechnology and biosafety; ; and
- f. Facilitating the implementation of the SADC Harmonised Seed Regulatory System.

10.2. Policy Statement: SADC shall complement national interventions by promoting and supporting measures for conservation and sustainable use of plant and animal genetic resources for food and agriculture

35) Plant and animal genetic resources are crucial for sustainable production, providing the biological basis for food security and supporting economic livelihoods of people. They are the breeders' most important raw material and the farmers' most essential input for improving the quality and quantity of farm produce. Indigenous knowledge and practices form the basis for ensuring food security, and they often play important roles in the conservation of local agricultural biodiversity.

36) The SADC region is endowed with a wealth of plant and animal genetic resources and indigenous innovations with the potential to contribute significantly to economic growth and people's wellbeing. However, these genetic resources are rapidly being lost thereby threatening the well-being of the population by affecting ecological processes that provide the ingredients for food, medicine, shelter and livelihoods. The Region has made efforts to conserve plant and animal genetic resources for food and agriculture.

37) Therefore, the proposed interventions will include:

- a. Promoting *ex-situ* and *in-situ/on-farm* conservation of genetic resources for food and agriculture;
- b. Strengthening national and regional capacity to conserve genetic resources;
- c. Promoting the development of crop varieties and animal breeds that are adaptable to climate change and variability;
- d. Promoting the access and benefit sharing of plant and animal genetic resources for food and agriculture; and
- e. Promoting collection and dissemination of information on genetic resources to enhance utilisation of conserved material.

10.3. Policy Statement: SADC shall complement and support national interventions to promote effective soil fertility management systems.

38) Soil fertility decline due to a range of factors from depletion of soil nutrients that results from continuous cropping without replenishment, to poor land management and poor general agricultural practices, is generally wide spread throughout the region. Raising the levels of organic and non-organic nutrient application and good agricultural practices including conservation agriculture (CA) will not only improve soil-fertility but also reduce environmental costs and offer interesting options for smallholder farming intensification.

39) Therefore, the proposed interventions will include:

- a. Promoting implementation of integrated soil fertility management programmes based in particular on soil mapping and adapted to soil diversity;
- b. Promoting private and public sector initiatives that promote economies of scale in the production, importation and distribution of fertilisers and complementary soil-fertility enhancing inputs; and
- c. Facilitating the harmonisation and standardization of guidelines on the proper use and disposal of fertilizer and other agrochemicals.

10.4. Policy Statement: SADC shall complement and support national interventions to improve the management of trans-boundary threats including pests and diseases

40) The prevalence of migratory pests including quelea birds, locusts and armyworm, results in significant crop losses every year. The control of migratory pests including cross border movement through trade are of particular regional relevance. Similarly, the surveillance and control of trans-boundary animal diseases (TAD) such as Contagious Bovine Pleuropneumonia (CBPP), foot-and-mouth disease (FMD) as a result of wildlife-livestock interaction, *Peste des Petits Ruminants* (PPR) and African Swine Fever (ASF) and other trans-boundary threats such as fires and theft is critical to livestock production.

41) Therefore, the proposed interventions will include:

- a. Harmonising Sanitary and Phytosanitary regulations in Member States in line with the Sanitary and Phytosanitary (SPS) Annex of the SADC Protocol on Trade;
- b. Harmonising national veterinary service systems to international standards;
- c. Harmonising national and regional early warning and response systems for Trans-boundary Animal Diseases (TADs), zoonoses and crop pests;
- d. Strengthening surveillance and control of major crop pests and diseases in the region;
- e. Building Member States' national capacities to manage transboundary pests and diseases of crops and comply with International Plant Protection Convention (IPPC) standards; and
- f. Informing and promoting coordinated action to address cross-border theft, in particular for livestock.

10.5. Policy Statement: SADC shall complement and support Member States' own national actions to improve the management of water resources for agriculture

42) Scarcity of water resources and growing competition for water in many sectors reduces its availability for agriculture, particularly irrigation. Key focus areas for the policy therefore include the effective management of shared water resources for agriculture particularly crop production in water scarce areas; the enhancement of water productivity; the reduction of water resource pollution; and water management options including water harvesting for the vast majority of farmers who are unlikely to access irrigation within the mid to long term. Water, including shared marine space, rivers and inland lakes, is also essential as habitat for fishery resources.

43) Therefore, the proposed interventions will include:

- a. Promoting the efficient and effective management of shared water resources for agriculture in the region within the framework of the SADC Protocol on Shared Watercourses;
- b. Further supporting existing policies /agreements including the SADC Water Policy by ensuring Member States' compliance;
- c. Enhancing productivity of water for agriculture through promotion of best practices including on-farm water conservation and efficient irrigation systems;
- d. Promoting integrated water resources management through *inter alia* water harvesting, reuse and recycling and development of water resources management infrastructure; and
- e. Developing common plans and guidelines for the reduction of pollution of water resources.

10.6. Policy Statement: SADC shall promote and support improved energy use in agriculture and sustainable bio-energy production by agriculture

44) Increasing total production through cultivation requires greater use of farm power and so does handling and processing of produce. At the current significantly low proportion of total regional electricity available to agriculture, farmer participation in certain production processes is limited by low levels of mechanical and electric energy use. With the added ever increasing costs of imported fossil fuels, the provision and use of energy for agriculture becomes more critical for the survival and expansion of viable agricultural farming enterprises.

45) On the other hand, agriculture is a potential supplier of renewable bio-energy especially from plant sources such as fuel alcohol and biodiesel. However, the diversion of land from food crops to bio-fuel manufacture may have serious consequences including the environmental impact biofuel plantations could have on water scarcity, deforestation, loss of biodiversity, food security and access and rights over land, hence the importance of ensuring sustainable bio-energy production.

46) Therefore, the proposed interventions will include:

- a. Promoting the sharing and use of best practices on affordable energy sources;
- b. Promoting innovative renewable energy sources such as solar, adapted to agriculture;
- c. Developing policy guidelines in bio-energy production;
- d. R&D in the sustainable co-production of food and bio-energy; and
- e. Prioritising availability of energy for irrigation.

11. FARM SUPPORT SYSTEMS AND SERVICES

11.1. ***Policy Statement: SADC shall complement and support Member States' measures designed to promote agricultural research and development in crops, livestock, fisheries and forestry***

47) The low uptake of known improved technologies by farmers is partly the cause for low productivity and therefore higher incidence of rural poverty and food insecurity in the region. Improvements in technology not only lead to gains in productivity but also assist in addressing emerging challenges such as climate change. The uptake and enhanced utilisation of improved farming technologies including breeding materials and other yield-enhancing inputs can only be achieved with improved market environment and increased access to credit, financial and institutional support at affordable and sustainable levels that improve returns on farming investments. This is also addressed under the specific objectives on trade, and finance and investment respectively.

48) Therefore, the proposed interventions will include:

- a. Providing policy guidance for the region's agricultural R&D;
- b. Promoting innovation for strategic and demand-driven R&D;
- c. Promoting private, public and international partnerships in R&D;
- d. Harmonizing policy frameworks on protection of intellectual and property rights including indigenous knowledge systems; and
- e. Informing strategies and instruments to effectively promote increased adoption rates of appropriate technologies by farmers, such as through research, capacity building and exchanges and dissemination of experiences.

11.2. ***Policy Statement: SADC shall complement and support Member States' measures designed to enhance regional and national agricultural, forestry and fisheries information systems***

49) An effective agricultural information management system (AIMS) provides policy makers, planners and relevant economic actors including smallholder farmers, access to reliable and timely information necessary for policy development, emergency preparedness, planning, and decision making. The timely collection, analysis and communication of information and monitoring of vulnerability, food security and weather patterns in the region

contribute significantly to timely interventions by relevant actors thereby enhancing food security and rural development.

50) Therefore, the proposed interventions will include:

- a. Developing a regional database on agriculture, forestry and fisheries and strengthening statistical data collection, analysis and dissemination at both the regional and national levels;
- b. Developing and supporting the implementation of common standards for databases across all subsectors that feed into the integrated regional database;
- c. Strengthening early warning systems for food security aimed at alerting Member States and other stakeholders of impending food security situations for appropriate interventions to be timely undertaken;
- d. Strengthening and integrating agricultural, forestry and fisheries market information systems; and
- e. Promoting the sharing of information and best practices, including development or improvement of information fora.

11.3. Policy Statement: SADC shall complement and support Member States' measures designed to enhance the capacity of institutions involved in agricultural development.

51) Farming knowledge, techniques and management practices, which are classically transmitted through farmers' own learning and sharing processes and advisory services, are also critical to increased production and productivity. This function has traditionally been undertaken by farm extension services, farmer organisations and specialised institutions such as R&D institutions, centres of excellence, commodity associations and such similar sub-sectoral institutions. It is imperative therefore that the role of such institutions be strengthened to promote higher degrees of knowledge and information sharing and the provision of appropriately tailored, effective and efficient farm support systems.

52) Therefore, the proposed interventions will include:

- a. Promoting human resource training to support agriculture, including critical skills development for all categories of players in the agricultural value-chain;
- b. Promoting the development or strengthening of organisations of farmers and other value-chain actors, including their operation at all-SADC apex levels for mutual support, joint policy advocacy and promotion of smallholder scale economies;
- c. Sharing best practice on sustainable credit systems to facilitate technological upgrading on agricultural value chains; and
- d. Developing a strategy for critical agriculture related transport and logistics infrastructure and services such as cold rooms.

12. FORESTRY AND FISHERIES

53) Forests have a range of important functions in the region's economies including ecological, e.g. soil protection, organic matter, habitat; social e.g. fuel wood, medicine, food stuffs such as fruits; economic e.g. timber, paper production, eco-tourism; and environmental particularly carbon sequestration. During the period 1990 to 2000, forest resources have however declined by 0.6% per annum due to deforestation to cater for agricultural, urbanisation and commercial purposes. Furthermore, forest resources have been lost to unlicensed / illegal logging and uncontrolled wild fires thereby causing serious forest degradation, affecting

livelihoods and sustainable economic development as the ability to maintain land productivity becomes constrained. Representing about 40% of the total land area, the SADC region's forest resource of nearly 395 million hectares with vast areas of natural habitats and a rich biodiversity, still offers high potential for sustainable and beneficial exploitation. The SADC Protocol on Forestry (2002) sets a comprehensive agenda for the sector at both national and regional levels.

54) With regards to fisheries, consumption and therefore demand for fish products, particularly from aquaculture, has grown significantly in many parts of the world including Southern Africa. With an exclusive economic zone of over 6 million square kilometres and a continental shelf of 503,646 sq km, the region has large fishing areas. Furthermore, it has a high potential for aquaculture production. However, key challenges affecting the region's fisheries sector include degradation of aquatic environments particularly from land based activities such as discharge of sewage, industrial effluent and agro-chemicals; weak management systems; overfishing; illegal, unreported and unregulated (IUU) fishing; limited development of aquaculture which only contributes less than 1% of the region's total fish production; and limited intra-regional trade and investment in fisheries. Promoting responsible and sustainable use of the living aquatic resources and aquatic ecosystems has been formalised as a priority objective of SADC under the Protocol on Fisheries (2001).

12.1. Policy Statement: SADC shall stimulate and support Member States' efforts to improve production, processing, trade, conservation and sustainable management of forest and fisheries resources

55) Therefore, the proposed interventions will include:

- a. Facilitating the implementation of the SADC Protocol on Forestry and on Fisheries to achieve their stated objectives;
- b. Promoting the conservation of forests as well as preservation of forest-related knowledge;
- c. Facilitating the development of aquaculture to optimise its economic contribution as a distinct enterprise and to release pressure on natural fisheries resources;
- d. Promoting the increased, sustainable production and productivity of fisheries resources particularly aquaculture;
- e. Promoting the development and implementation of enhanced monitoring, surveillance and control systems for forests, forestry products and fisheries;
- f. Promoting (R&D) in relevant areas of forestry and fisheries including the spread of diseases of relevance to cultured aquatic species and in identifying new sources of raw materials for fish feed;;
- g. Promoting trade and investment in forestry and fisheries products;
- h. Facilitating the development of cross-border value-chains particularly of forestry products; and Developing strategies on invasive forest and fisheries species.

PART 3B: IMPROVE REGIONAL AND INTERNATIONAL TRADE AND ACCESS TO MARKETS OF AGRICULTURAL PRODUCTS

56) Regional trade integration and the promotion of Southern Africa's trade with the rest of the World are central to SADC's agenda as outlined in the Treaty of SADC of 1992 and SADC Protocol on Trade. Key to improved regional and international trade is the creation of a conducive environment for agriculture and food related regional trade by rationalizing trade measures and reducing trade impediments; supporting farmers and traders to access and compete in regional and international markets; coordinating and/or harmonizing trade relations with third parties on relevant issues; and assessing and addressing related adjustment costs that may affect specific areas or categories of the population.

57) Agricultural products are for many countries their main commodities entering regional and global trade. Despite this importance, agriculture's overall trade performance has been less than satisfactory in the SADC region. The region's net trade of agricultural products is significantly negative despite production potential. In addition to productivity objectives described earlier, SADC's competitiveness in agriculture will depend on significant improvement in domestic and regional trade effectiveness and removal of factors restricting participation by a large proportion of small-scale farmers in regional markets.

13. IMPROVING THE EFFICIENCY AND EFFECTIVENESS OF THE REGION'S INPUT AND OUTPUT MARKETS AND STIMULATING BROAD FARMERS' PARTICIPATION

13.1. *Policy Statement: SADC shall complement and support Member States' measures designed to improve farmers' access to and participation in regional input and output markets*

58) Agricultural growth, particularly in the small-scale farming sector, has powerful leverage effects on the rest of the economy. Strengthening farmers' participation in input and output markets has the scope to generate surplus production for the market, contribute to food security and economic development, and improve farmers' returns on investment which will lead to enhanced adoption of improved technologies and good agricultural practices. Their participation in input and output markets is, however, partly determined by farm level factors including access to resources and the level of asset endowment such as land, capital, knowledge, and agro-ecological conditions. In addition, prices paid for inputs and prices received for produce have an important bearing on whether or not farmers participate in markets.

59) While the potential to produce surpluses in the region exists, smallholder farmers are also generally scattered and not well serviced by major transport, communication and power infrastructure. Resultantly, the provision of high cost inputs to smallholder farmers comes at a premium. There is therefore a real challenge to cost-effectively assemble their produce into exportable supplies with predictable quantities and quality. Similarly, even in domestic markets, national producers generally can often not compete with imports from low-cost producers abroad.

60) Therefore, the proposed interventions will include:

- a. Promoting competition in input and output markets;

- b. Promoting regional agricultural value-chains, Business-to-Business (B2B) and public-private partnerships (PPP) to increase production including importation, and distribution of agricultural inputs and provide markets for outputs;
- c. Within SADC countries, eliminating tariffs and Non Tariff Barriers (NTB) for trade in relevant intra-regional inputs and outputs, in line with the SADC Protocol on Trade;
- d. Eliminating/reducing tariffs and non-tariff barriers in relevant inputs with third countries.
- e. Promoting national and regional commodity exchanges and their linkages;
- f. Promoting and harmonizing relevant market norms that restrict regional trade in areas such as commodity grades and standards, traceability, storage, quality specifications, insurance systems, warehouse receipts systems (WRS) and environmental norms for trade;
- g. Improving and integrating agricultural market information and intelligence systems; and
- h. Facilitating the participation of informal traders, SMEs and marginalised groups such as women and youth.

13.2. Policy Statement: SADC shall complement and support Member States' measures designed to enhance price risk management and stabilization

61) Price volatility, seasonality and unpredictability are high in the food and agricultural sector. High price risks arise due *inter alia* to inelasticity of demand for food, small partitioned markets, limited storage, poor political and economic stability including unpredictable and counter-productive public interventions, poor market information and intelligence resulting in poor trade performance and market ineffectiveness in the region, and instability of global markets. The situation provides significant disincentives for farmers, particularly risk averse small-holders, and businesses to produce and trade. It can also affect food consumers and social stability, and generate high public intervention costs to respond to crises. These undermine the region's agricultural competitiveness and productivity, as well as food security.

62) Therefore the proposed interventions will include:

- a. Promoting investment in the region's storage and related infrastructure;
- b. Promoting the development of commodity exchanges;
- c. Promoting contract farming and value-chain governance;
- d. Improving price information systems; and
- e. Promoting market friendly food shortage / emergency policies.

14. IMPROVING THE REGIONAL AND INTERNATIONAL TRADE ENVIRONMENT FOR AGRICULTURE

14.1. Policy Statement: SADC shall complement and support Member States' measures designed to reduce non-tariff measures and barriers on trade of agriculture goods and services.

63) Many trade policy/promotion processes are not specific to agriculture, but the need for multi-country coordination on trade policies, the importance of agricultural trade in SADC and the complex social and economic implications of related policies make it a priority issue for this Policy. Non-tariff barriers (NTBs) affect about one third of agriculture trade in the region, often despite limited technical or economic justification.

64) Among the NTBs are non-technical NTBs such as import/export bans, rules of origin (RoO) and customs procedures, which have significant impact on trade particularly in sectors that involve small scale farmers. With regards to technical NTBs such as Sanitary and Phytosanitary (SPS) measures, which are actually necessary for trade, rationalization and harmonization is needed in SADC to increase agricultural exports both within and outside the region. However, enhancing these regulations can also bear significant investment costs for the public and the private sectors, hence a case for regional support.

65) Therefore, in collaboration with other regional initiatives to avoid duplication of efforts and inconsistencies, the proposed interventions will include:

- a. Developing approaches to eliminate NTBs and supporting Members States efforts in that direction.
- b. Adopting common approaches on elimination of export bans and similar trade disincentives;
- c. Committing Member States to make the NTB reporting mechanism more transparent, more efficient, and better known through for instance, increased awareness in the private sector;
- d. Harmonizing the relevant Non-Tariff measures, particularly those dealing with food security such as technical standards for grains;
- e. Harmonising and /or benchmarking national and regional standards to international standards while recognizing, in some cases/sectors, the limited ability of some countries or players to achieve them;
- f. Promoting mutual recognition of Member States' SPS certificates;
- g. Rationalizing and simplifying Rules of Origin (RoO) issues; and
- h. In countries where this is lacking, supporting the development of national plans and related resource mobilisation to address financial and technical needs associated with the implementation of the above measures by both the public and the private sector.

14.2. Policy Statement: SADC shall complement and support Member States' measures designed to rationalise external SADC tariffs and implement safeguard measures in agriculture

66) External tariff regulations such as import and export duties and taxes, lists of sensitive products, and other safeguard mechanisms are important instruments to consider for agriculture and food security in the context of regional integration and trade relations with third parties. Whilst intra-SADC tariffs were expected to reach zero in 2012 as a result of the creation of the Free Trade Area (FTA), the Policy will target the reduction of extra-SADC tariffs, particularly for production factors such as water equipment, renewable energy and green technology.

67) While in the long run, it is expected that increased economic production and trade in SADC should compensate for the loss of fiscal revenues, there is a need to address this problem in the short and medium terms.

68) Therefore, the proposed interventions will include:

- a. Promoting fiscal reforms and improved revenue collection mechanisms, under the leadership of appropriate ministries/institutions, so as to promote agriculture and food security.
- b. Addressing different fiscal and socio-economic needs of different categories of population and economic players in the region, e.g. through evidence based consultation processes on tariffs, safeguard measures and related issues;

- c. Reducing external tariffs on selected production factors such as green technologies;
- d. Addressing institutional capacity to implement a harmonized system; and
- e. Informing strategies to address adjustment costs of trade integration and openness on rural labour through, for example, policy research and capacity building support.

14.3. Policy Statement: SADC shall complement and support Member States' measures designed to improve coordination of trade relations with third parties with regards to agriculture and food

69) SADC Member States are involved in international trade negotiations, agreements and regulatory systems such as technical standard setting processes that have a high impact on agriculture and that can affect regional integration. Such processes are implemented at different levels, globally, regionally and bilaterally. Key focus areas for the Policy will therefore involve promoting technical preparedness, consistency and solidarity among Member States during trade negotiations and follow-up implementation in order to support regional integration and strengthen SADC Member States' negotiating power.

70) Therefore, the proposed interventions will include:

- a. Promoting Member States' technical preparedness, unity and consistency during trade negotiations and follow-up implementation, in order to strengthen their collective negotiating power;
- b. Facilitating negotiation processes between Member States and promoting harmonized views by, for example, making consultation mechanisms between them more effective and systematic, and specifying the institutional processes of negotiating collectively;
- c. Promoting effective consultation of non-state actors during the trade negotiations;
- d. Promoting solid policy analysis and evidence-based advocacy to support these processes on a sustained basis; and
- e. Strengthening advocacy, negotiation and technical skills / institutions of sector departments and partner institutions.

15. IMPROVING THE DEVELOPMENT OF AGRICULTURE RELATED MARKET INFRASTRUCTURE

15.1. Policy Statement: SADC shall complement and support Member States' measures designed to promote agriculture-related infrastructure development and improve agriculture's utilisation of existing infrastructure

71) Agricultural development in SADC is directly affected by high transport and logistical costs, which constitute the greatest portion of marketing costs in the region. These are affected by not only the state of transport and logistical infrastructure such as roads, ports, border facilities and railways, but also by transport means and organisation such as border controls and transit procedures among other factors. Other infrastructure such as storage and market facilities, power, telecommunication and water are also critical for agriculture and agro-processing but rural areas are poorly supplied. However, while some infrastructure developments such as rural roads, storage, farm land and water, SPS and commodity exchange facilities, and produce marketing logistics, are specific to agriculture, most infrastructure such as railways, harbour logistics and transport corridors, falls outside the scope of agriculture programmes.

72) The scale of infrastructure development needs including those that are critical for agriculture requires significant increases in financial resources allocated to the sub-sector. In addition, improved planning, budget execution, maintenance and management of existing infrastructure as well as the promotion of more economic technical choices are also required. In general, considerable efforts are already being deployed in the SADC region under separate national and regional initiatives such as growth / transport / trade corridors, to deal with such needs. Beyond those regional initiatives, there is also a need to make sure infrastructure developments do promote actual movement of goods from rural areas to urban markets at the national level.

73) Whilst related investment needs fall mostly under Member States' responsibility, agriculture needs such as rural infrastructure and market facilities, should be better factored into general infrastructure planning.

74) Therefore the proposed interventions will include:

- a. Ensuring agriculture is adequately taken into account under infrastructure development efforts particularly for transport, storage and market logistics, at both regional and national levels, by offering support to Member States and relevant institutions in undertaking policy research, strategic planning, advocacy and resource mobilisation; and
- b. Assessing the needs for more effective utilisation of existing infrastructure and promoting new infrastructure development in agriculture specific areas that have a regional/multi-country scope. Examples would include inter-country transport corridors, SPS facilities, regional commodity exchange networks and shared water resources for agriculture such as cross-border irrigation schemes.

PART 3C: IMPROVE PRIVATE AND PUBLIC SECTOR ENGAGEMENT AND INVESTMENT IN THE AGRICULTURAL VALUE-CHAINS

75) There is a need to transform the region's largely subsistence agrarian society into a sustainable commercialized agriculture and a diversified economy while achieving food security. This will require high and sustained rates of agricultural growth through increased investment in and for agriculture by all actors both private and the public sectors. However, to stimulate private sector investment in agriculture requires an enabling, predictable and transparent policy environment that makes agriculture profitable. Additionally, infrastructure development and critical institutional improvements are often required to encourage private sector investment.

76) Despite growing international demand for manufactured products from agro-industry, forestry and fisheries, most Southern African countries are yet to make significant progress towards adding value to agricultural, forestry and fisheries products. Agro-processing development can provide positive impacts on rural and urban employment; offer market access, create business linkages with small to medium enterprises (SME); enhance food security; contribute to the much needed industrialisation and exploitation of underutilized natural resources and agro-processing capacity in the region; and improve overall competitiveness and trade balance.

77) Without adequate access to capital, the returns that agriculture offers remain very low, making it less attractive to produce more for the market and improve food security. In link with the proposed SADC Industrialisation Policy, this Policy will focus on (i) agri-business value chain promotion, including agro-processing of key commodities; and (ii) agricultural and rural financing.

16. VALUE-CHAIN PROMOTION IN AGRICULTURE

16.1. *Policy Statement: SADC shall complement and support Member States' measures designed to enhance the enabling agri-business, farming and agro-industry environment*

78) Both agri-business and agro-industries face numerous but similar constraints in investment including risk related to access to credit, labour regulations, water and power supply, institutions and market intelligence, fiscal and trade regulations, market information, intellectual property rights, R&D, and the state of market infrastructure particularly the state of roads, transport, and storage. Additionally, agro-industries face challenges with farm production particularly the inability of small scale farmers to meet required quantity and quality supplies demanded, and the complexity of operations involving numerous and scattered small scale farmers. Furthermore, whilst agri-business has the potential to assist farming enterprises through forward contracts and such similar arrangements, the cost of financing and adherence by the farming community particularly small scale farming enterprises to legal supply agreements adds further challenges thereby negatively affecting the cost of doing business.

79) At the regional level, action is more critical for macro-level issues such as the macro-economic and regional business environment. The proposed interventions will therefore aim at:

- a. Promoting the development of cross-border partnerships and investment by the private sector, including the rural and farming community, along agro-industry and agri-business value-chains;
- b. Facilitating the development or review of national strategies and instruments for accelerated natural resources and agro-processing and agri-business development;
- c. Promoting the development of common guidelines on subsidies and levels of investment in agriculture related sectors;
- d. Promoting strategic public sector investment in prime movers of agricultural development and Member States' continued commitment to agreed priorities;
- e. Establishing a mechanism that enhances the provision of financial and legal support for regional and country level public investments within the agricultural sector;
- f. Promoting SADC as an agriculture, forestry and fisheries investment destination;
- g. Promoting, as defined under specific objective number 2, the development of the necessary infrastructure to support agricultural development;
- h. Promoting the establishment of farmer institutions to strengthen the value-chain and their bargaining power; and
- i. Eliminating barriers to investment.

17. MOBILISATION OF FINANCIAL CAPITAL FOR AGRICULTURE, AGRO-INDUSTRY AND AGRI-BUSINESS

17.1. *Policy Statement: SADC shall promote and support the development of regional level mechanisms and instruments that support agricultural and rural financing*

80) Financial capital is critical to farming and business development. Despite individual differences, SADC countries face common challenges regarding both access to, and availability of finance services, *i.e.* loans, insurance, savings and foreign exchange. Micro-credit is generally more expensive and poorly adapted to agriculture, forestry and fisheries especially in an environment where there are few agriculture, forestry and fisheries specific financing regulatory systems. Larger finance institutions are reluctant, unless at high cost, to lend to agriculture, forestry and fisheries in general and more particularly to small farmers and investors because security, repayment and contract enforcement are reckoned to be poor.

81) Worsening the situation is the lack of substitutes to freehold land-based collateral. Also, poor information flow, as information appears too costly to acquire, between potential lenders and borrowers especially rural borrowers, restricts market growth. However, the rapid spread of mobile phones across the region, the development of new information technology systems for processing multiple microfinance institutions' transactions and for identifying clients as well as advances made in agricultural value chain finance offer new opportunities for expanding agricultural financial services.

82) Addressing key constraints that affect access to, and availability of, finance is, however, primarily a function of the private sector and national governments. At the regional level, the related strategy aims at:

- a. Promoting the development of regional guarantee / insurance mechanisms to support national loan facilities towards reducing overall agricultural / rural financing costs;
- b. Facilitating the review / development of an enabling and regulatory environment for rural financing;

- c. Promoting research, capacity building and improved data and information collection and sharing systems to better articulate agricultural and rural financing policies and service provision: and
- d. Promoting collaboration between research and financial institutions to provide information/data for improved investment in agriculture.

PART 3D

REDUCE SOCIAL AND ECONOMIC VULNERABILITY OF THE REGION'S POPULATION IN THE CONTEXT OF FOOD AND NUTRITION SECURITY AND THE CHANGING ECONOMIC AND CLIMATIC ENVIRONMENT

83) Addressing vulnerability to food and nutrition security threats and rural poverty related issues is high on SADC's regional integration agenda. A number of cross cutting critical forms of vulnerability including climate change and variability, gender and equity issues, HIV/AIDS, and other such chronic and transitory vulnerabilities, limit the prospects of attaining food and nutrition security. With the vast majority of SADC's population dependent on agriculture for their livelihoods, optimizing the potential opportunities that agriculture offers towards ensuring food and nutrition security, has a greater impact on reducing poverty, malnutrition and hunger. It is essential therefore that the Policy deal with these challenges to agricultural development and economic transformation taking into account existing national, regional and international programmes.

18. ADDRESSING CHRONIC AND TRANSITORY VULNERABILITY TO THE DIVERSITY OF FOOD SECURITY RISKS IN A CHANGING ECONOMIC ENVIRONMENT

18.1. ***Policy Statement: SADC shall support Member States to enhance and adapt, where relevant, their respective national vulnerability reduction strategies and plans including contingency plans and associated instruments***

84) Apart from the critical challenges facing agriculture earlier described, all SADC countries share similar concerns regarding the vulnerability of the agricultural sector and livelihoods to a wide range of acute¹ and longer term threats such as climate change, nutrition and market factors. However, Member States, for various reasons, have not committed sufficient budget resources to ensure sustainable information and response systems. As such, related capacity to respond to shocks remains generally weak in Southern Africa, hence the need, at the regional level, to focus on interventions that add value to national initiatives such as safeguarding and strengthening the resilience of smallholder producers' livelihoods.

85) Strengthening national systems to major food security shocks/disasters, within the framework of the SADC Disaster Risk Reduction Policy and proposed interventions and action plans, will be the primary priority of this Policy.

86) Therefore the proposed interventions will include:

- a. Complementing national initiatives and focusing on cross-border threats that require a coordinated regional response;
- b. Enhancing the adaptive capacities of all the relevant sub-sectors of the agriculture sector;

¹ Acute Vulnerability: Acute or seasonal vulnerability concerns exposure to both quick and slow onset shocks, these include natural hazards, seasonal climatic variability and many health epidemics (although not HIV and AIDS)

- c. Supporting and coordinating decision making and strategic development processes at regional and national levels to strengthen the related regional information, monitoring and analysis package/systems and network of national systems;
- d. Promoting locally or regionally sourced food aid and post-emergency input schemes so as to stimulate local/regional markets and increasing farmers' participation in markets;
- e. Adopting measures to avoid or minimise unnecessary, often abrupt and therefore unduly disruptive and counter-productive trade restrictions when food shortages occur;
- f. Improving targeting of aid to lessen negative impacts on market development and the crowding out of the private sector; and
- g. Promoting and supporting the establishment of the proposed regional strategic food reserve facility so as to promote regional markets.

19. ADDRESSING CLIMATE CHANGE, VARIABILITY AND RELATED VULNERABILITY

19.1. *Policy Statement: SADC shall support measures to improve the regions' capacity to adapt to and mitigate climate change and variability*

87) Climate change and its impact on the agricultural sector is not only about variable and unpredictable rainfall that will impact on crop and livestock production but also temperature changes that are forecast to increase by between 1 and 3 degrees Celsius by 2080. Even such small increases in mean temperature are projected to lead to a decrease in crop productivity. As such, changes in temperature regimes could affect growing locations, the length of the growing season, crop yields, planting and harvest dates. Similarly, changes in rainfall patterns is expected to cause increased demand for water for irrigation in regions where existing water supply and quality is already negatively affected by other factors. With respect to livestock, the effects of climate change and variability is expected in changes in forage quality and quantity and generally in reduced productivity due to temperatures exceeding thermal comfort thresholds for livestock. Increased prevalence of animal diseases is also expected.

88) The key issue, therefore, for SADC is how to deal with adaptation and mitigation to climate change and variability as well as fostering a unified regional response to climate change. From an economic standpoint, there is also the need for a coordinated mechanism to benefit from the carbon markets for environmental services, sequestering carbon in forests and land and preserving biodiversity.

89) Therefore, the proposed interventions will include:

- a. Strengthening regional research in developing appropriate adaptation strategies for climate variability and change in the agriculture sector;
- b. Developing capacity for carbon stock inventory and analysis with a view to enabling the agriculture sector to benefit from carbon trading;
- c. Promoting R&D on climate change and variability data and information generation and dissemination for the provision of early warning information to farmers;
- d. Promoting the adoption and incorporation of sound environmental impact mitigation measures in national and regional agricultural policies and programmes;
- e. Ensuring the effective engagement and participation of the agriculture sector in the international dialogue on climate change; and
- f. Supporting SADC Member States to achieve their own climate change policies, strategies and programmes

20. MITIGATING GENDER RELATED VULNERABILITY AND MARGINALISATION

20.1. Policy Statement: SADC shall promote and support the effective mainstreaming of gender issues of relevance to agriculture and food and nutrition security into regional and national policies and strategies

90) Gender equity and empowerment is an established regional priority at three levels, first as a human rights issue; second, as an economic / developmental issue; and third, as a social issue. Gender equality is of even more significant importance to agriculture as women make up at least half the rural work force and cultural practices tend to be more conservative and traditional with biases against women.

91) In support of the initiatives under the SADC Protocol on Gender and Development, this policy will identify and disseminate technical knowledge of improved approaches to closing the gender gap on access to land, financial services, water management, agricultural production and market access by smallholder farmers particularly women farmers.

92) Therefore, the proposed interventions will include:

- a. Promoting the drafting, ratification and implementation of regional and national legislation that effectively mainstreams and takes into account gender issues of relevance to agriculture and food and nutrition security;
- b. Facilitating Member States' respective plans to develop related institutional and legal frameworks at national level that address gender issues in the agriculture sector;
- c. Supporting capacity building targeted at policy makers, legal personnel and other stakeholders in the development of policy, legal frameworks and information and knowledge management systems that support the mainstreaming of gender issues; and
- d. Monitoring of joint commitments and achievements made by Member States and the region towards gender mainstreaming.

20.2. Policy Statement: SADC shall promote and support the effective mainstreaming of maternal and child malnutrition issues of relevance to agriculture and food and nutrition security into regional and national policies and strategies

93) Maternal and child malnutrition and other vulnerable groups are critical to food security. Indeed, under-nutrition severely affects mothers' health and mortality. In turn, mothers' condition affects children's nutritional status. Ultimately, malnutrition negatively affects the region's long term development efforts, particularly education effectiveness, labour productivity, and health systems. In Southern Africa, the link with HIV/AIDS issues and over-nutrition development, obesity in particular, only add to these challenges. As food and incomes influence malnutrition, agriculture can contribute to the fight against it.

94) Considering the fact that fighting malnutrition is mainly a national responsibility, the proposed interventions from a regional and agricultural perspective, will include:

- a. Promoting integration of nutrition in food security statistics, monitoring systems and decision making support tools;
- b. Promoting policy research, dialogue and advocacy on nutrition in agriculture at regional level; and.

- c. Creating awareness and establishing links with other stakeholders in promoting health lifestyle and nutrition programmes

21. MITIGATING HIV/AIDS RELATED VULNERABILITY AND MARGINALISATION

21.1. ***Policy Statement: SADC shall promote and support comprehensive research to inform policies and strategies on effective mitigation of HIV/AIDS impact on agriculture and food security***

95) In line with the SADC multi-sector HIV and AIDS Strategic Framework and Plan of Action 2010-2015, this policy will promote capacity building and mainstreaming of HIV/AIDS into all agricultural policies and plans. While the impact of HIV and AIDS is evident in the agriculture sector, the role of the sector in mitigating the impacts has not been clearly defined. Focus on HIV/AIDS has largely remained biased towards the health sector and leaning more on the workplace and little towards external mainstreaming. This is evidenced in that most of the affected countries in the region do not have a policy/strategy on HIV/AIDS with respect to agriculture.

96) Therefore, the proposed interventions will include:

- a. Promoting a regional R&D programme on socio-economic strategies to mitigate the impact of HIV/AIDS on agriculture and food security;
- b. Developing and sharing guidelines to mainstream HIV/AIDS in agriculture; and
- c. Facilitating access to finance and expertise by Member States, to mainstream HIV/AIDS in agriculture at national level, depending on own needs and plans.

22. MITIGATING THE VULNERABILITY OF MIGRANT/MOBILE RURAL PEOPLE

22.1. ***Policy Statement: SADC shall generate, promote and support the development and sharing of knowledge, guidelines and common norms on vulnerability issues affecting rural migrants, including cross-border migrants and farm workers***

97) Whilst issues of migrant/mobile rural people fall mainly under Member States' own responsibility, regional integration calls for 'freer' movement of factors of production including labour. Agricultural development influences rural-urban migration and so do rural poverty reduction policies and strategies. What is not sufficiently articulated in agricultural policies are the effects and therefore vulnerabilities experienced by these labour movements.

98) To effectively establish and benchmark vulnerabilities experienced by rural migrant and agricultural workers, the strategy will therefore include:

- a. Supporting Member States' and regional Central Statistical Office (CSO) networks' efforts to meet this objective through research, dialogue, education and awareness promotion.

23. FIGHTING AGAINST UNEMPLOYMENT AND MARGINALISATION OF THE RURAL YOUTH

23.1. Policy Statement: SADC shall promote and support the generation and sharing of knowledge on issues and strategies affecting employment of the rural youth along the agricultural value-chain

99) Despite differences between countries, the typical Southern African youth is poor; rural; has poor access to economic activities, education, land and capital. The regional priority on youth promotion has been articulated under the SADC strategy on Comprehensive Care and Support for Orphans, Vulnerable Children and Youth (OVCY), which focuses on issues of youth education, capacity building, employment and labour. The key challenge therefore is to ensure that the vast majority of rural youth, most of whom don't have much of a choice apart from farming, have appropriate skills and access to production factors and support services. Like for women, the youth factor needs to be mainstreamed in regional and national policies and strategies dealing *inter alia* with access to land, farm support systems and services and rural finance.

100) To ensure that the vast majority of rural youth have appropriate skills and access to production factors and support services, the strategy will therefore include:

- a. Informing Member States' related strategies and regional CSO networks' efforts through research, data, dialogue, and awareness promotion; and
- b. Facilitate Member States in promoting agriculture as an attractive career choice for the youth.

PART 4

POLICY IMPLEMENTATION MECHANISMS

24. CONDITIONS FOR SUCCESSFUL IMPLEMENTATION

101) Member States acknowledge the following as some of the key success factors in the implementation of the Policy:

- a. Recognition of the high potential of SADC to be a leading agricultural producer and commitment to unleashing this potential;
- b. Member States agree to focus on a few actions with the most rapid impact on agricultural growth and within those specific objectives, focus on a few selected strategic interventions and commodities at a time;
- c. Strong political will and commitment to the Policy by all Member States and key stakeholders through its alignment with and domestication into national policies, strategies and programmes;
- d. Establishment of an Agricultural Development Fund (ADF) to provide funding under the Policy's Regional Agricultural Investment Plan (RAIP) that corresponds to interventions under Member States' own CAADP National Agricultural Investment Plans (NAIPs);
- e. Establishment of a strong monitoring and evaluation system involving both, SADC Secretariat, Member States and key stakeholders;
- f. Creation, partly through adaptation of existing arrangements, of a mechanism for full engagement of private sector organisations, e.g. through public, private partnerships (PPP), in the implementation of accelerated agricultural development programmes promoted under the Policy;
- g. Confidence built among financial partners regarding the effectiveness of the policy agenda and its governance;
- h. Progressive elimination of barriers to trade and investment in compliance with the SADC Trade Protocol and Annexes.
- i. Establishment of the requisite infrastructure to support agricultural development; and
- j. Actual mainstreaming of Gender, youth, HIV/AIDS, environment including climate change and variability and other cross cutting issues into the Policy interventions at both regional and national levels.

25. PHASED PLANNING AND IMPLEMENTATION

102) This Policy will be implemented in cycles reviewable every 5 years in line with the principles of responsiveness to change and progressivity and as capacity and systems are further developed and strengthened. While not ignoring interventions that have longer term implementation timeframes, the Policy will employ a phased implementation approach that

allows, in its early stages of implementation, to focus on areas that can most quickly address some of the region's agricultural challenges.

103) The implementation of this Policy involves three key broad groups of partners, the SADC Secretariat at the regional level, SADC Member State Governments at the national level and key stakeholders at global, continental, regional and national levels including public, private, non-governmental organisations (NGOs), subsidiary regional organisations (SROs), multi/bi-lateral development agencies/partners, and civil society, all within and outside the agriculture sector including trade, finance and legislation.

104) In line with the principle of subsidiarity and the general terms that will be specified at the regional level for each intervention, each Member State and key stakeholders will be responsible for planning and implementing related action at the national level. It will be these respective Policy-related national plans/programmes encapsulated into National Agricultural Investment Plans (NAIP) that will eventually provide the basis for formal agreements between SADC and individual Member States for the disbursement of resources under the RAP.

105) Similarly, the planning and implementation of interventions at the regional level, in line with the Policy regional level objectives, will be the responsibility of the SADC Secretariat and key stakeholders. The SADC Secretariat will focus on the implementation of core functions. In other instances, implementation will be externalized through performance-based and time-bound agreements for functions/issues that are better addressed by other institutions due to their nature or for which the Secretariat does not have nor wish to set up specialized internal capacity.

106) The Policy planning processes will require dedicated resources at both the national and regional levels. Similarly, implementation capacity at both the national and regional levels will need to be enhanced as part of Policy implementation.

26. FINANCIAL INSTRUMENTS

107) The levels of funding and types of resources will be defined in the Regional Agricultural Investment Plan (RAIP). The RAIP and NAIPS will be mutually aligned. The cost of Policy programmes as will be outlined in the RAIP, and the cost of Policy administration shall be funded under an Agricultural Development Fund (ADF).

108) The ADF will be developed and operationalised in line with the overall SADC Regional Development Fund which has been set up by the SADC Treaty. Based on mutually agreed and contractually specified arrangements, Member States will source part of their resource requirements for programme implementation from the ADF.

27. INSTITUTIONAL AND CORPORATE GOVERNANCE STRUCTURE

109) The Council of Ministers is responsible for overseeing the development, functioning and proper implementation of policies. It consists of Ministers from each Member State, typically the Ministers responsible for Foreign Affairs or Economic Planning and Finance depending on individual countries.

110) The Council of Ministers is informed and advised on sectoral issues by the Sectoral/Cluster of Ministers which are supported and serviced by the relevant Standing Committees of Senior Officials.

111) The Council of Ministers shall establish a sub-committee of Ministers to oversee the implementation of the Policy.

28. MONITORING AND EVALUATION

112) The process of Monitoring and Evaluating the Policy shall be based on *Results Based Management* principles namely, focusing on the achievement of results that contribute effectively towards achieving goals or outcomes; improving institutional and stakeholders' knowledge on the Policy and its impacts; improving decision making; and promoting an accountability culture towards results.

113) Stakeholder participation in the Policy monitoring and evaluation systems will also be critical. This engagement will promote transparency in the implementation of the Policy, create a platform for adding value to the Policy and continue to broaden ownership.

114) Monitoring and evaluation of the Policy shall be based on manageable processes, measurable and verifiable indicators and conform to basic rules of simplicity, timeliness and cost effectiveness. In alignment with the CAADP and national M&E systems, a framework for tracking progress towards *Results* delivery and outcomes will be developed with clear key performance indicators.

29. STAKEHOLDERS RESPONSIBILITIES

115) The Heads of States and Government:

- a. Commit the SADC Secretariat to take all necessary measures to effectively implement this Policy, and in particular, to define more precisely the plan of action, the institutional structure, the financing system and lastly the monitoring and evaluation mechanism;
- b. Commit Member States to domesticate the specific objectives and interventions of the Policy, and to promote linkages between them and national level policies and strategies;
- c. Encourage other regional integration or cooperation organizations to support and contribute to the successful implementation of the RAP by aligning, where possible, their strategies, policies and programs in the agricultural, food and natural resource management sectors; and
- d. Encourage all private sector stakeholders and socio-professional organizations to actively take part in the implementation, monitoring and evaluation of this Policy.